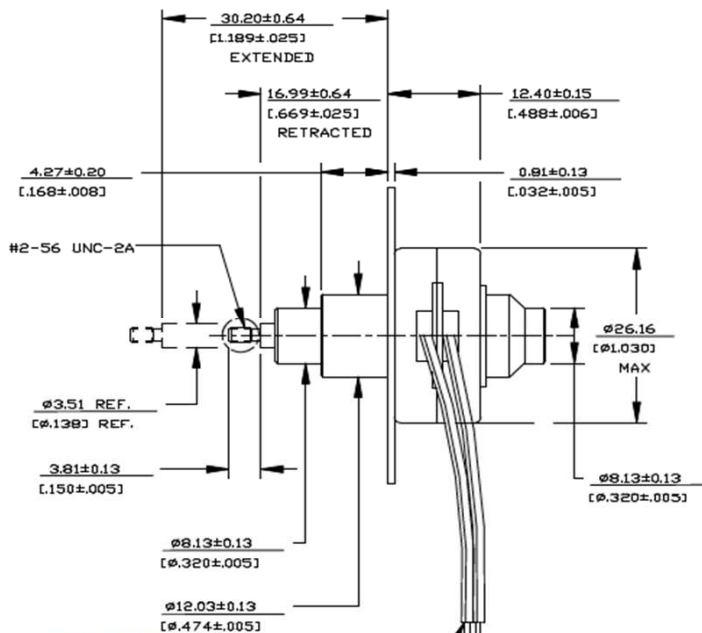
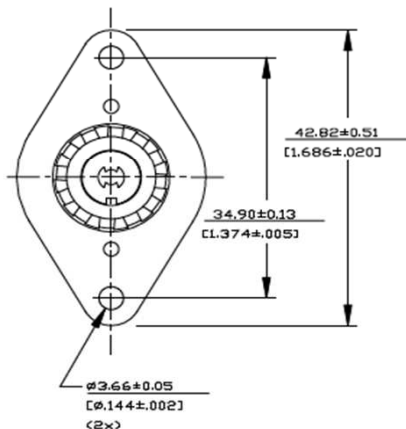


26DAM-K SERIES (CAPTIVE)



DIMENSIONS: MILLIMETERS
INCHES

26DAM-K

Electrical Data		26DAMXXD1B-K Bipolar	26DAMXXD2B-K Bipolar	26DAMXXD1U-K Unipolar	26DAMXXD2U-K Unipolar	
1 Operating Voltage		5	12	5	12	VDC
2 Resistance per Phase, ± 10%		14.6	84.0	14.6	84.0	Ohms
3 Inductance per Phase, typ		6.5	33.6	3.8	20.5	mH
4 Rated Current per Phase *		0.34	0.14	0.34	0.14	A
Coil independent parameters	XX					
5 Max. Holding Force	@ .001" (0.0254mm)	33.4 (120)		20 (72)		N (oz)
	@ .002" (0.0508mm)	25 (90)		15.3 (55)		N (oz)
	@ .004" (0.1016mm)	14.5 (52)		8.9 (32)		N (oz)
6 Min. Holding Force (Unenergized)	@ .001" (0.0254mm)	55.6 (200)				N (oz)
	@ .002" (0.0508mm)	13.9 (50)				N (oz)
	@ .004" (0.1016mm)	5.56 (20)				N (oz)
7 Maximum travel	@ .001" (0.0254mm)	13.2 (0.52)				mm (in)
	@ .002" (0.0508mm)	13.2 (0.52)				mm (in)
	@ .004" (0.1016mm)	13.2 (0.52)				mm (in)
8 Step Angle		15 ± 1				Degree
9 Steps per Revolution		24				
10 Ambient Temperature Range (operating)		-20 to +70 (-4 to +158)				°C (°F)
11 Maximum Coil Temperature		130 (266)				°C (°F)
12 Bearing Type		Ball Bearing				
13 Insulation Resistance at 500 VDC		20				Mohms
14 Dielectric Withstanding Voltage		650 for 2 seconds				VAC
15 Weight		34 (1.2)				g (oz)
16 Leadwire		AWG 28, UL 1429				

All Motor Data Values at 20°C Unless Otherwise Specified

* Energize at Rated Current, 2 Phase On

