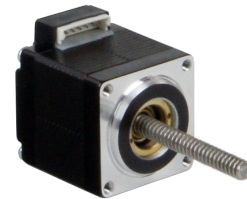
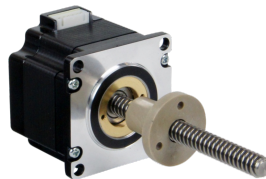


Linear Lead Screw Motors



Series Features

- *Cost effective linear actuators*
- *Compact, efficient and reliable*
- *Standard NEMA mounting sizes: 8, 11, 14, 17, and 23*
- *Available for large OEM orders*



Series Details

Linear stepping motors, now available from Applied Motion Products, open new avenues for equipment designers who require high performance and excellent endurance in a very small linear actuator package.

The various designs use a proprietary manufacturing process, which incorporates engineering thermoplastics in the rotor drive nut and a stainless steel lead screw. This allows the motor to run much quieter and more efficiently, with an increase in durability in comparison to the V-thread and bronze nut configuration commonly used in other motors. Motor life is 10 times that of the bronze nut style, requires no maintenance, and is available at the same cost.

These hybrid stepping motors come in 5 different frame sizes: NEMA 8, 11, 14, 17, and 23. Available configurations include Captive, Noncaptive and External nut versions.

For applications requiring precise positioning, rapid motion and long life, these linear motors are ideal. Typical uses include X-Y tables, medical devices, semiconductor processing, telecommunication equipment as well as numerous other uses.

Please [Contact Us](#) to request more information specifically for your application. Once we have the size requirements from you, we'll reach out to share how we can help.

Due to the specialized nature of these products, they are well suited for large scale OEM projects. As such, smaller scale projects requiring the use of these linear lead screw motors will have lower priority at this time.