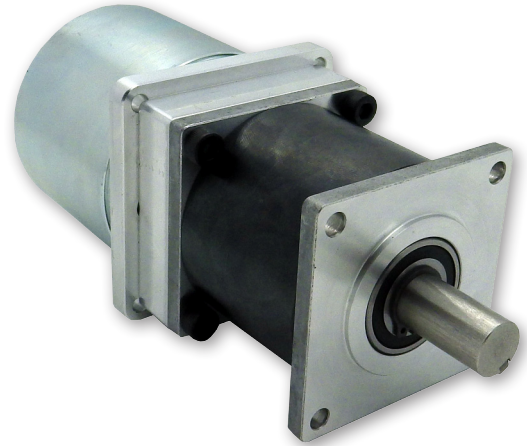


IP57-M66 Series - Geared Planetary DC Servo Motor

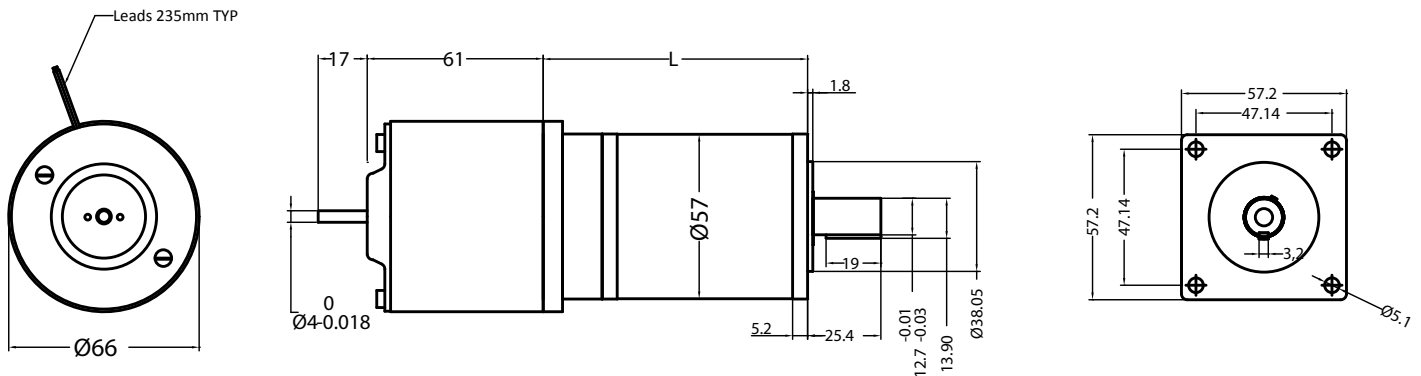
The IP57 / M66 series geared DC servo motors utilise a high strength planetary gearhead.

Features:

- Low cost due to advanced design and manufacturing techniques
- Controlled backlash for accurate positioning
- High continuous and peak torque capacity
- Ironless rotor low inertia servo motor including encoder and tacho options
- Wide range of standard gear ratios
- Ideal for packaging systems, conveyors and general purpose light industrial systems



Outline dimensions (mm)

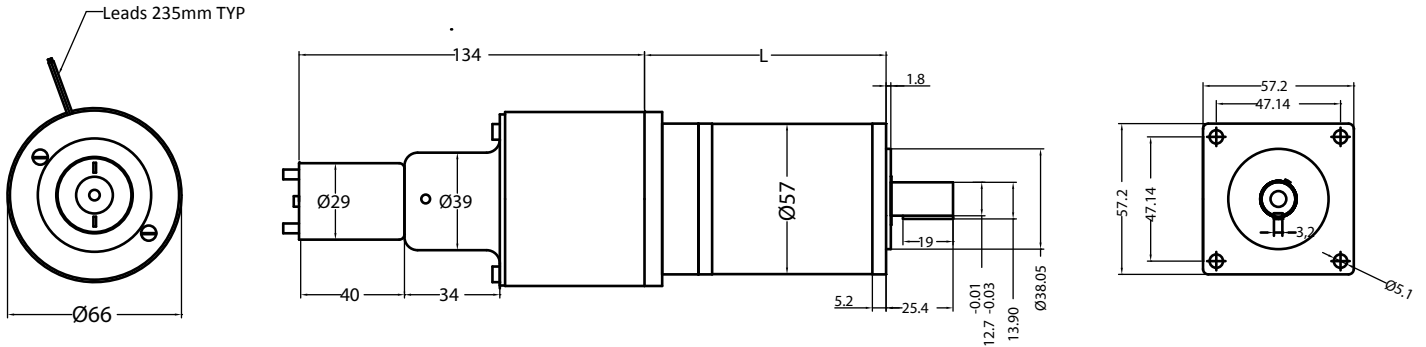


Geared motor specification

Gearbox	Gear Ratio N:1	Motor Model	Length (L) mm	Rated Speed rpm	Rated Torque Nm	Peak Torque Nm	Max Radial Load (12 mm from mounting face)	Max Axial Load N	Typical Backlash arc.min		
IP57-M01	5	M66CE12	60.7	340	0.4	0.8	560	490	≤20		
	10		74.2	170	0.8	1.6					
	5	M66CE24	60.7	320	0.45	1.35					
	10		74.2	160	0.9	2.7					
IP57-M02	25	M66CE12	72.7	68	2	4					
	50		86.2	34	4	8					
	100		86.2	17	8	16					
	25	M66CE24	72.7	64	2.25	6.75					
	50		86.2	32	4.5	13.5					
	100		86.2	16	9	27					
IP57-M03	125	M66CE12	85.7	13.6	10	20			560	490	≤30
	250		99.2	6.8	20	40					
	125	M66CE24	85.7	12.8	11.25	33.75					
	250		85.7	6.4	22.5	45					

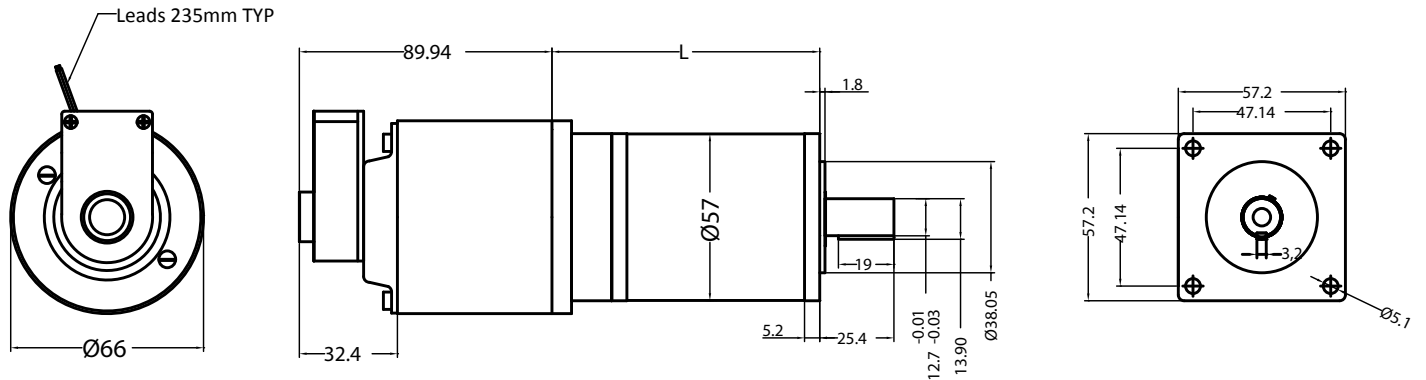


Additional options - Geared motor tacho



Model	Units	M66C12 T3	M66C24 T3	M66C24 T6
Nominal Voltage	V DC	12	24-30	24-30
Motor Specification		As above		
Tacho specification	-	T3		T6
Voltage constant	V/1000rpm	3.25		6.50
Average ripple	Peak/peak	3%		
Ripple frequency	Per rev	18 cycles		
Rotor Resistance	Ohms	12		47
Max continuous speed	rpm	3000		

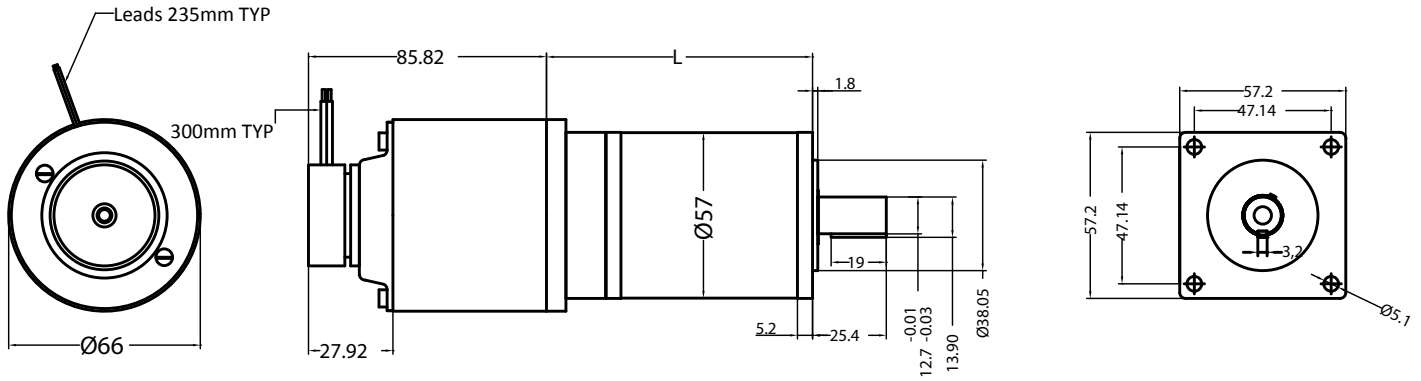
Additional options - Geared motor encoder



Model	Units	M66CI...L-12	M66CI...L-24
Nominal Voltage	V DC	12	24-30
Motor specification		As above	
Encoder type		CI...L	
Supply	V DC	5 +/-0.5	
Max. Output signal	V DC	5	
Signal wave form		Square	
Output Circuit		RS422	
Output Configuration		Dual Track + Index	
Resolution	Lines	100 or 500 Standard (others available on request)	



Additional options - Geared motor brake



Model	Units	M66CE-12 DB12/24	M66CE-24 DB12/24
Nominal Voltage	VDC	12	24-30
Motor Specification		As above	
Brake Type		DB12	DB24
Supply	VDC	12	24
Operating Current	Amps	<0.50	0.22
Min. Pull-in Voltage	V DC	<10	18
Max. Drop-out Voltage	V DC	>6	8
Output Configuration	Ncm	10	10