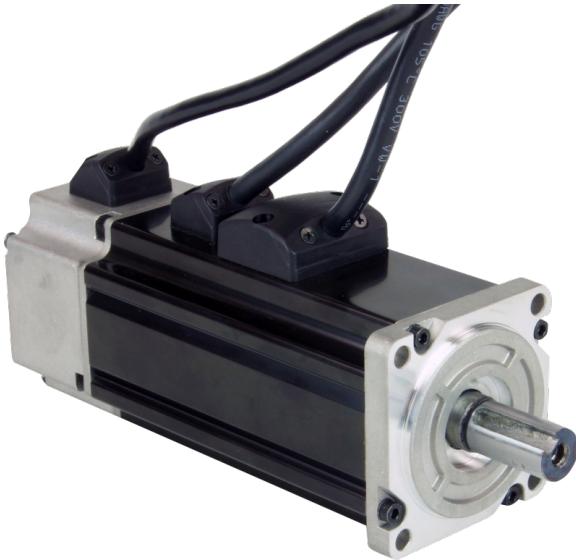


## J0400-355-4-000

60mm Servo Motor, 400W, with Brake

1pc. - \$555.00  
50pc. - \$416.25



### Product Features

- High torque density
- Low rotor inertia
- Compact size
- High-resolution, incremental encoders (2500 lines, 10000 counts)
- Brake
- IP65 rated for harsh environments






### Description

High performance brushless AC servo motor with brake.  
Standard configuration includes high-resolution, incremental encoder feedback.

## Specifications

<b>Part Number</b>	J0400-355-4-000
<b>Frame Size</b>	60 mm
<b>Continuous Torque</b>	11.24 in-lb
<b>Peak Torque</b>	30.97 in-lb
<b>Rated Power</b>	400 watts
<b>Rated Voltage</b>	60 DC volts
<b>Rated Speed</b>	3000 rpm
<b>Peak Speed</b>	6000 rpm
<b>Rated Current</b>	6.5 A rms
<b>Peak Current</b>	19.5 A rms
<b>Torque Constant</b>	1.74 in-lb/A
<b>Voltage Constant</b>	11.4 V/krpm
<b>Armature Resistance</b>	0.57 Line-to-Line ohms
<b>Armature Inductance</b>	2 Line-to-Line mH
<b>Motor Length</b>	6.24 inch
<b>Rotor Inertia</b>	0.00269 oz-in-sec <sup>2</sup>
<b>Weight</b>	4.2 lbs
<b>Integral Holding Brake</b>	Yes
<b>Storage Temperature</b>	-20 to 80 °C
<b>Operating Temperature</b>	0 to 40 °C
<b>Insulation Class</b>	Class B (130 °C)
<b>Maximum Radial Load</b>	54 lbs
<b>Maximum Thrust Load</b>	15 lbs
<b>Shaft Run Out</b>	NA
<b>Radial Play</b>	NA
<b>End Play</b>	NA
<b>Perpendicularity</b>	0.0015 inches
<b>Concentricity</b>	0.0015 inches

## Downloads

<b>Datasheet</b>	No datasheets available for this product.
<b>2D Drawing</b>	 <a href="#">J0400-355-4-000_RevA.pdf</a>
<b>3D Drawing</b>	 <a href="#">J0400-355-4-000A.igs</a>
<b>Speed-Torque Curves</b>	 <a href="#">speed torque model J0400-305-4-000 sv7.pdf</a>
<b>Agency Approvals</b>	There are no related agency approval documents at this time.
<b>Application Notes</b>	There are currently no Application Notes available for this product.

## Pricing

<b>J0400-355-4-000</b> Part No. J0400-355-4-000	
<b>1pc.</b>	\$555.00
<b>25pc.</b>	\$477.30
<b>50pc.</b>	\$416.25
<b>100pc.</b>	<a href="#">Contact us</a> for 100+ piece pricing.

## Products in the Series J Series Servo Motors

\* Closeout priced products are highlighted in green.

\* Items with web only pricing are highlighted in yellow.

Part Number	Frame Size	Continuous Torque (in-lb)	Peak Torque (in-lb)	Motor Length (inch)	Rated Power (W)	Rotor Inertia (oz-in-sec <sup>2</sup> )	1pc./50pc.
<a href="#">J0100-301-3-000</a>	40 mm	2.8	8.1	4.33	100	0.00059	\$296.00 / \$222.00
<a href="#">J0100-303-3-000</a>	40 mm	2.83	8.5	4.33	100	0.00059	\$338.00 / \$253.50
<a href="#">J0100-351-3-000</a>	40 mm	2.83	8.14	5.82	100	0.00073	\$464.00 / \$348.00
<a href="#">J0100-353-3-000</a>	40 mm	2.83	8.5	5.82	100	0.00066	\$464.00 / \$348.00
<a href="#">J0200-301-4-000</a>	60 mm	5.66	15	4.17	200	0.00133	\$354.00 / \$265.50
<a href="#">J0200-302-4-000</a>	60 mm	5.66	15.04	4.17	200	0.00133	\$354.00 / \$265.50
<a href="#">J0200-304-4-000</a>	60 mm	5.66	15	4.17	200	0.00133	\$354.00 / \$265.50
<a href="#">J0200-351-4-000</a>	60 mm	5.66	15	5.45	200	0.00133	\$505.00 / \$378.75
<a href="#">J0200-352-4-000</a>	60 mm	5.66	15.04	5.45	200	0.00133	\$505.00 / \$378.75
<a href="#">J0200-354-4-000</a>	60 mm	5.66	15	5.45	200	0.00134	\$505.00 / \$378.75
<a href="#">J0400-301-4-000</a>	60 mm	11.23	30.95	4.68	400	0.00269	\$411.00 / \$308.25
<a href="#">J0400-302-4-000</a>	60 mm	11.24	30.97	4.68	400	0.00269	\$411.00 / \$308.25
<a href="#">J0400-305-4-000</a>	60 mm	11.24	30.97	4.68	400	0.00269	\$411.00 / \$308.25
<a href="#">J0400-351-4-000</a>	60 mm	11.24	30.95	6.24	400	0.00211	\$555.00 / \$416.25
<a href="#">J0400-352-4-000</a>	60 mm	11.24	30.97	6.24	400	.00211	\$555.00 / \$416.25
<a href="#">J0400-355-4-000</a>	60 mm	11.24	30.97	6.24	400	0.00269	\$555.00 / \$416.25
<a href="#">J0750-302-5-000</a>	80 mm	21.24	61.95	5.19	750	0.01316	\$495.00 / \$371.25
<a href="#">J0750-352-5-000</a>	80 mm	21.24	61.95	7.04	750	0.01373	\$710.00 / \$532.50