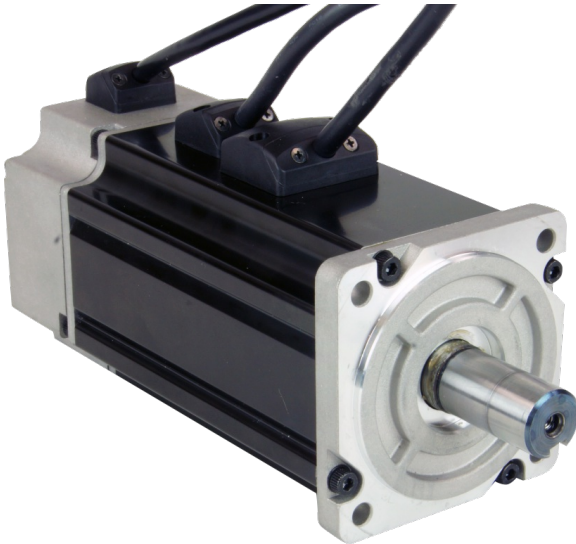


J0750-352-5-000

80mm Servo Motor, 750W, with Brake

1pc. - \$710.00
50pc. - \$532.50



Product Features

- High torque density
- Low rotor inertia
- Compact size
- High-resolution, incremental encoders (2500 lines, 10000 counts)
- Brake
- IP65 rated for harsh environments



Description

High performance brushless AC servo motor with brake.




Standard configuration includes high-resolution, incremental encoder feedback.

Please note that a VL series gearhead purchased for this motor will require a special mounting adaptor and 2 weeks lead time. Please contact customer service for the price of this adaptor.

Specifications

Part Number	J0750-352-5-000
Frame Size	80 mm
Continuous Torque	21.24 in-lb
Peak Torque	61.95 in-lb
Rated Power	750 watts
Rated Voltage	220 AC volts
Rated Speed	3000 rpm
Peak Speed	5500 rpm
Rated Current	4.5 A rms
Peak Current	13.5 A rms
Torque Constant	4.7 in-lb/A
Voltage Constant	36.1 V/krpm
Armature Resistance	1.5 Line-to-Line ohms
Armature Inductance	8.0 Line-to-Line mH
Motor Length	7.04 inch
Rotor Inertia	0.01373 oz-in-sec ²
Weight	7.6 lbs
Integral Holding Brake	Yes
Storage Temperature	-20 to 80 °C
Operating Temperature	0 to 40 °C
Insulation Class	Class B (130 °C)
Maximum Radial Load	60 lbs
Maximum Thrust Load	20 lbs
Shaft Run Out	NA
Radial Play	NA
End Play	NA
Perpendicularity	0.0015 inches
Concentricity	0.0015 inches

Downloads

Datasheet	No datasheets available for this product.
2D Drawing	 J0750-352-5-000_RevB.pdf
3D Drawing	 J0750-352-5-000A.igs
Speed-Torque Curves	 speed torque J0750-302-5-000 bluac5.pdf
Agency Approvals	There are no related agency approval documents at this time.
Application Notes	There are currently no Application Notes available for this product.

Pricing

J0750-352-5-000 Part No. J0750-352-5-000	
1pc.	\$710.00
25pc.	\$610.60
50pc.	\$532.50
100pc.	Contact us for 100+ piece pricing.

Products in the Series J Series Servo Motors

* Closeout priced products are highlighted in green.

* Items with web only pricing are highlighted in yellow.

Part Number	Frame Size	Continuous Torque (in-lb)	Peak Torque (in-lb)	Motor Length (inch)	Rated Power (W)	Rotor Inertia (oz-in-sec ²)	1pc./50pc.
J0100-301-3-000	40 mm	2.8	8.1	4.33	100	0.00059	\$296.00 / \$222.00
J0100-303-3-000	40 mm	2.83	8.5	4.33	100	0.00059	\$338.00 / \$253.50
J0100-351-3-000	40 mm	2.83	8.14	5.82	100	0.00073	\$464.00 / \$348.00
J0100-353-3-000	40 mm	2.83	8.5	5.82	100	0.00066	\$464.00 / \$348.00
J0200-301-4-000	60 mm	5.66	15	4.17	200	0.00133	\$354.00 / \$265.50
J0200-302-4-000	60 mm	5.66	15.04	4.17	200	0.00133	\$354.00 / \$265.50
J0200-304-4-000	60 mm	5.66	15	4.17	200	0.00133	\$354.00 / \$265.50
J0200-351-4-000	60 mm	5.66	15	5.45	200	0.00133	\$505.00 / \$378.75
J0200-352-4-000	60 mm	5.66	15.04	5.45	200	0.00133	\$505.00 / \$378.75
J0200-354-4-000	60 mm	5.66	15	5.45	200	0.00134	\$505.00 / \$378.75
J0400-301-4-000	60 mm	11.23	30.95	4.68	400	0.00269	\$411.00 / \$308.25
J0400-302-4-000	60 mm	11.24	30.97	4.68	400	0.00269	\$411.00 / \$308.25
J0400-305-4-000	60 mm	11.24	30.97	4.68	400	0.00269	\$411.00 / \$308.25
J0400-351-4-000	60 mm	11.24	30.95	6.24	400	0.00211	\$555.00 / \$416.25
J0400-352-4-000	60 mm	11.24	30.97	6.24	400	.00211	\$555.00 / \$416.25
J0400-355-4-000	60 mm	11.24	30.97	6.24	400	0.00269	\$555.00 / \$416.25
J0750-302-5-000	80 mm	21.24	61.95	5.19	750	0.01316	\$495.00 / \$371.25
J0750-352-5-000	80 mm	21.24	61.95	7.04	750	0.01373	\$710.00 / \$532.50