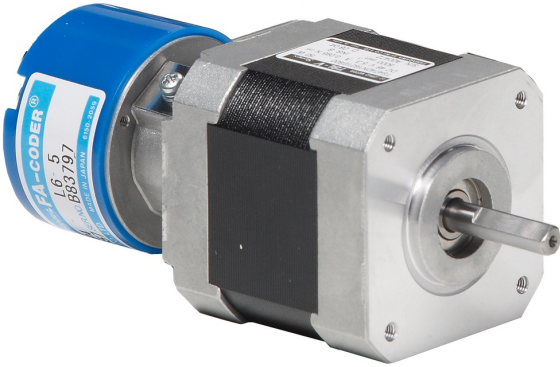


V0050-214-A-000

NEMA 17 Servo Motor, 50W

1pc. - \$380.00
50pc. - \$285.00



Product Features

- Brushless DC servo motor
- Standard NEMA frame size
- Bearing-mount encoder
- High resolution, incremental encoder (2048 lines, 8192 counts)








Description

Brushless DC servo motor with high resolution encoder feedback.

Specifications

Part Number	V0050-214-A-000
Frame Size	NEMA 17
Continuous Torque	0.84 in-lb
Peak Torque	2.6 in-lb
Rated Power	50 watts
Rated Voltage	48 volts
Rated Speed	5000 rpm
Peak Speed	8000 rpm
Rated Current	5.3 A rms
Peak Current	15.2 A rms
Torque Constant	0.168 in-lb/A
Voltage Constant	2.0 V/krpm
Armature Resistance	0.45 ohms
Armature Inductance	0.8 mH
Motor Length	1.77 inch
Rotor Inertia	4.11E-04 oz-in-sec ²
Weight	0.66 lbs
Integral Holding Brake	No
Storage Temperature	-10 to 85 °C
Operating Temperature	0 to 40 °C
Insulation Class	Class B (130 °C)
Maximum Radial Load	8.8 lbs
Maximum Thrust Load	4.4 lbs
Shaft Run Out	NA
Radial Play	NA
End Play	0.004 inch max w/ 4.4 lb load
Perpendicularity	NA
Concentricity	NA

Downloads

Datasheet	 Servo-Products-Datasheet-925-0008.pdf
2D Drawing	 V0050_FA_Enc_3D.pdf  V0050-214-A-000 RevD.pdf
3D Drawing	 V0050-N1X-A-000_wFA_ENC.igs
Speed-Torque Curves	 SV7_speed-torque.pdf
Agency Approvals	There are no related agency approval documents at this time.
Application Notes	There are currently no Application Notes available for this product.

Pricing

	V0050-214-A-000 Part No. V0050-214-A-000
1pc.	\$380.00
25pc.	\$326.80
50pc.	\$285.00
100pc.	Contact us for 100+ piece pricing.