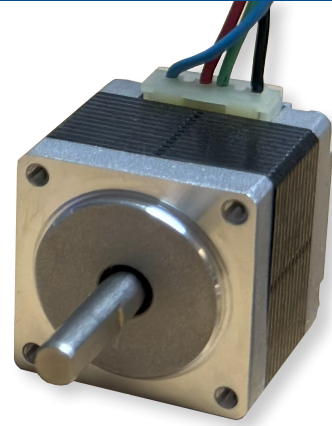


11MSM - NEMA 11 stepper motor, higher torque, 2 phase, 1.8°

- Holding torque, up to 91 mNm
- Standard models available from stock
- Cost optimised OEM range
- Mechanical or electrical customisation is available upon request
- Part of wide range in NEMA sizes 08, 11, 14, 17, 23 and 34

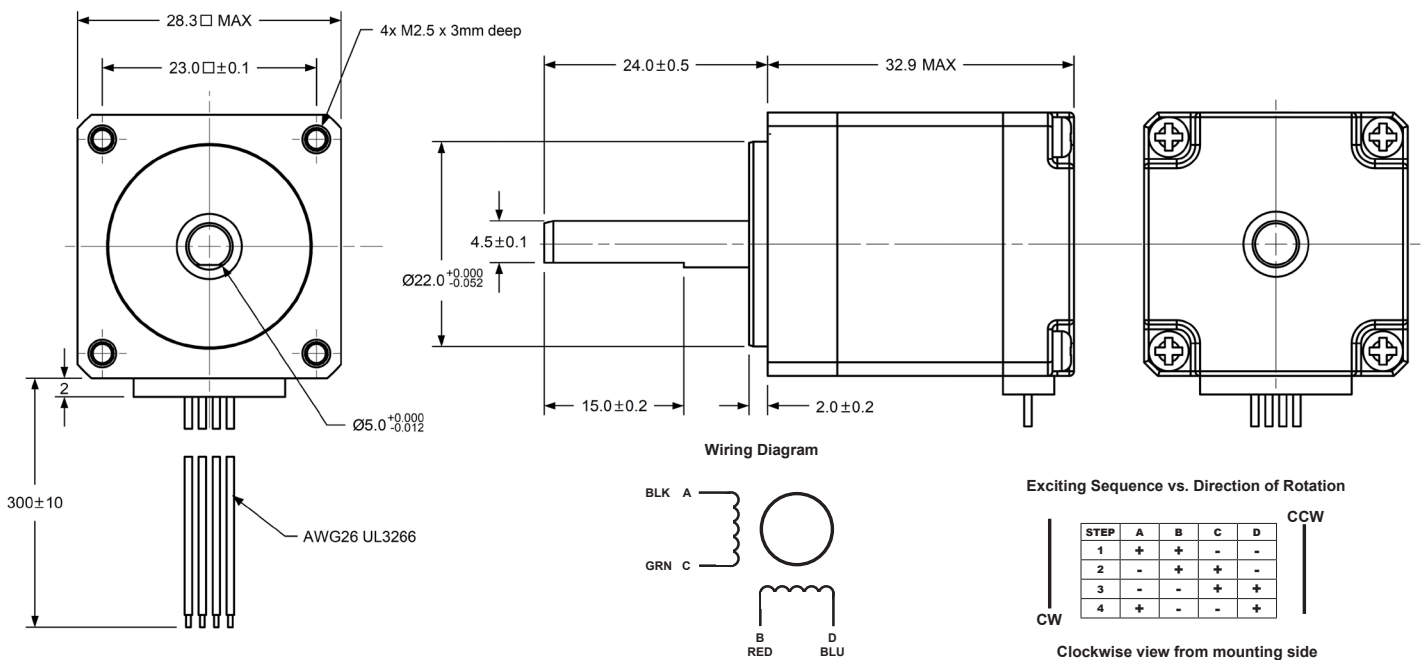


11MSM - Specification

Mclennan Part Number	Connection	Rated Current Amps	Holding Torque Nm Typ	Resistance Ω $\pm 10\% @ 20^\circ\text{C}$	Inductance mH	Detent Torque mNm	Rotor Inertia g cm ²	Motor Weight kg
11MSM031005-S	Leads	0.5	0.09	10.9	9.6	5	9	0.1
11MSM031010-S	Leads	1.0	0.091	2.7	2.5	5	9	0.1

Parameter	Value	Parameter	Value	Parameter	Value
Phase	2	Coil Type	Bi-Polar	Certification	RoHS
Step Angle	1.8°	Terminal Number	4	IP Rating	IP40
Shaft	Single	Connection	Leads		
Frame Size	NEMA11 (28.3 mm)	Insulation Class	B (130°C)		

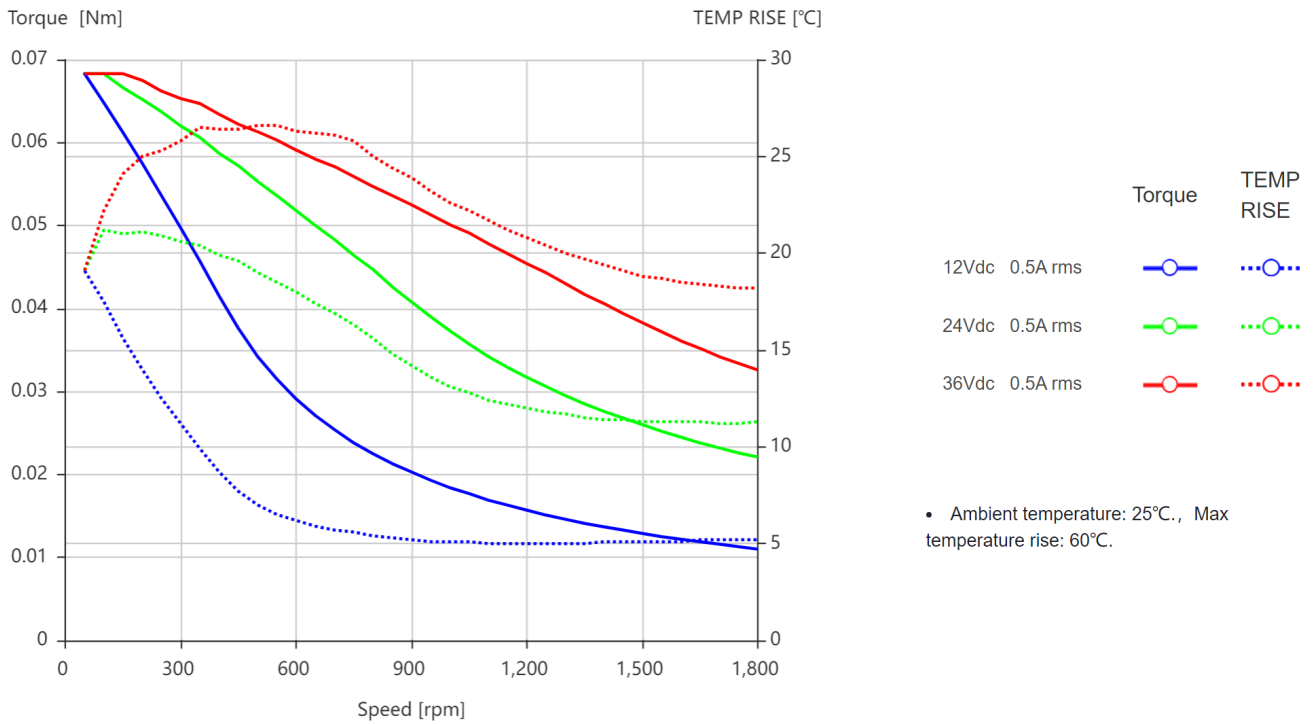
11MSM - Dimensions (mm)





11MSM - Torque Curves Typical performance (Pull-Out torque)

11MSM031005-S



11MSM031010-S

