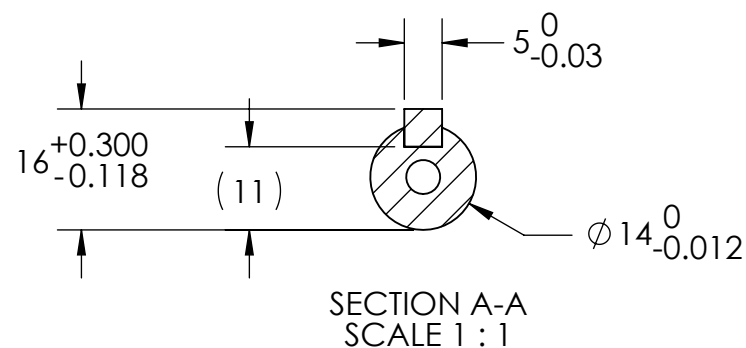


4

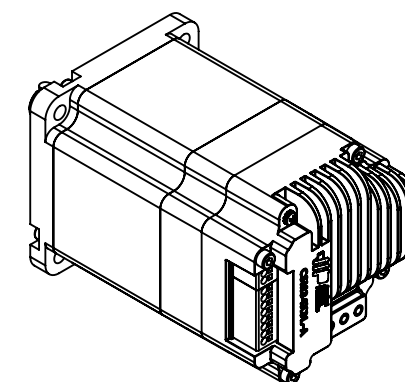
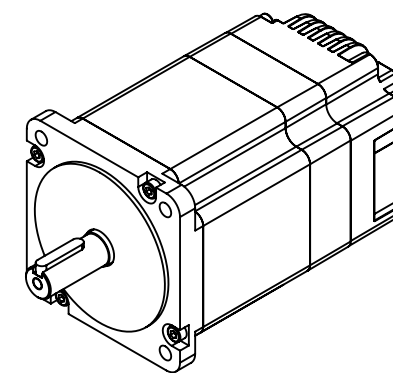
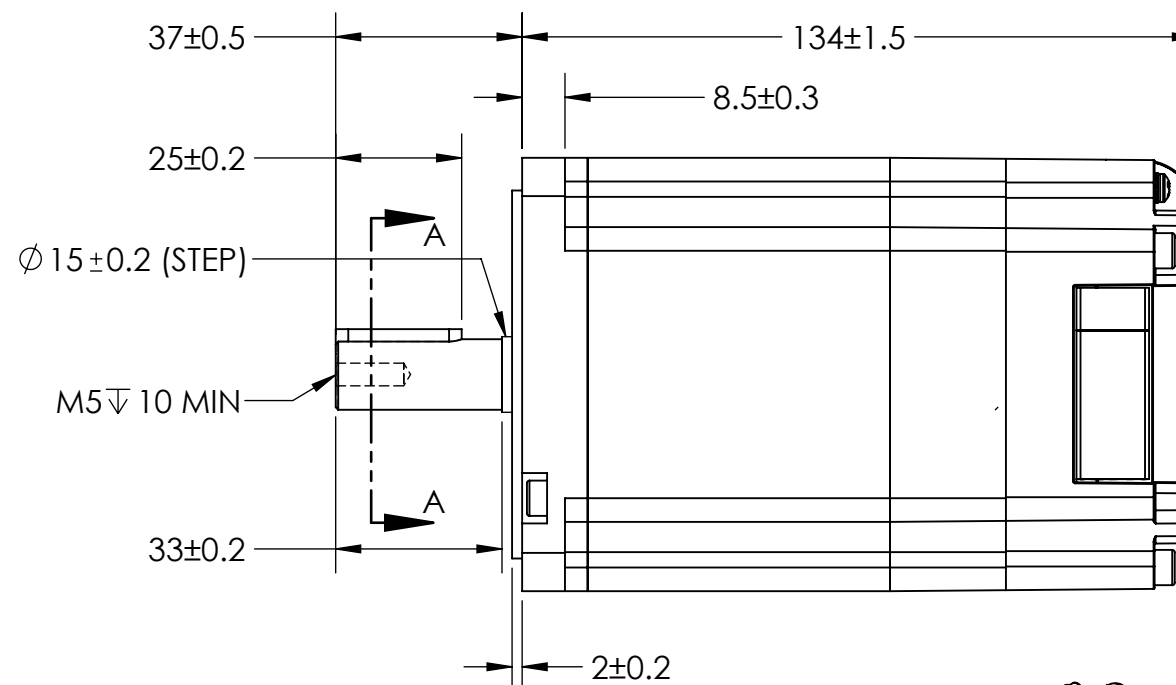
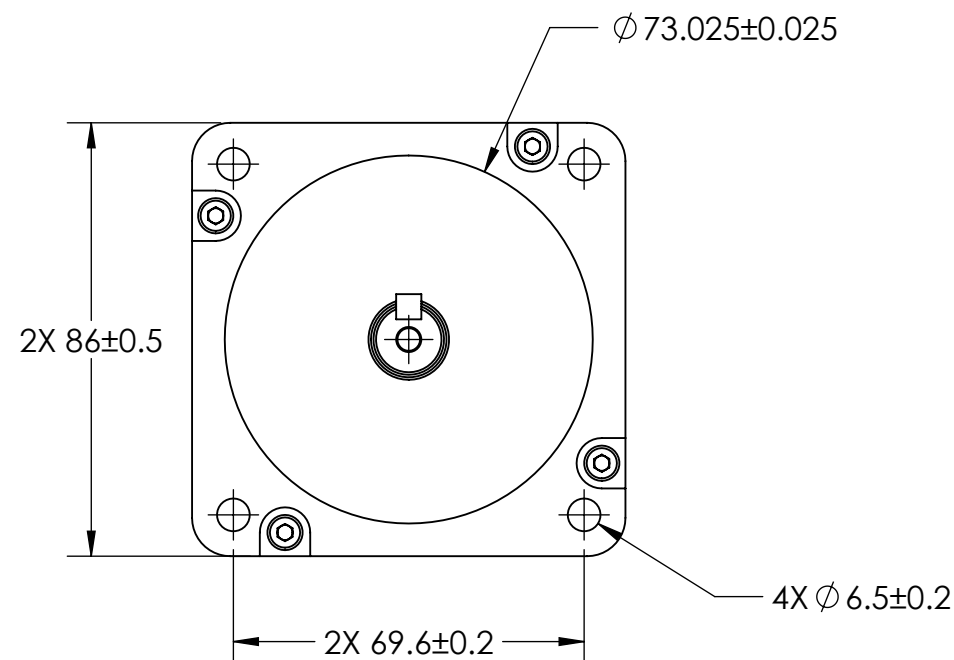
3

2

1



REVISIONS				
ECO #	REV.	DESCRIPTION	DATE	APPROVED
8877	A	INITIAL RELEASE	01/13/23	K.KESLER



## SPECIFICATIONS

INPUT VOLTAGE	24 TO 48 VDC	HOLDING TORQUE	7.6 Nm
STEP ANGLE	1.8°	MAX AXIAL LOAD	<29 N
STEP ACCURACY	±0.09°	MAX RADIAL LOAD	260 N @ SHAFT END
AMBIENT TEMP	0 TO 40 °C	RADIAL PLAY	0.02 mm MAX @500 gf
STORAGE TEMP	-30 TO 70 °C	END PLAY	0.2 mm MAX @150 N
TEMP RISE	80 K MAX	SHAFT RUNOUT	0.025 mm
ROTOR INERTIA	2580 g · cm <sup>2</sup>	WEIGHT	3.05 kg
RATED SPEED	0-2000 RPM	HUMIDITY	<90% (NON-CONDENSING)
APPROVALS		CE, RoHS	

## NOTES:

- REFER TO PRODUCT HARDWARE MANUAL ON APPLIED-MOTION.COM FOR MORE DETAILS.
- SHAFT LOADS FOR L<sub>10</sub> LIFE OF 20,000 HOURS AT 1000 RPM. RADIAL LOAD AT END OF SHAFT.

<p><b>Applied Motion Products</b> A MOONS' COMPANY PROPRIETARY AND CONFIDENTIAL</p> <p>THE INFORMATION CONTAINED IN THIS DRAWING IS THE SOLE PROPERTY OF APPLIED MOTION PRODUCTS. ANY REPRODUCTION IN PART OR AS A WHOLE WITHOUT THE WRITTEN PERMISSION OF APPLIED MOTION PRODUCTS IS PROHIBITED.</p>	THIRD ANGLE PROJECTION		NAME	DATE	TITLE: <b>INTEGRATED STEPPER MOTOR</b>	
	UNLESS OTHERWISE SPECIFIED: DIMENSIONS ARE IN MILLIMETERS	DRAWN	C.BREUNINGER	01/12/23		
	TOLERANCES: - ANGULAR: ± 0.5 - ONE DECIMAL PLACE: ± 0.25 - TWO DECIMAL PLACES: ± 0.13	PRE.CHECK	-	-		
	MATERIAL	PRE.APPROVAL	-	-		
	FINISH	FIN.CHECK	K.KESLER	01/12/23		
DO NOT SCALE DRAWING	SAP: 4696351006263			SIZE	DWG. NO.	REV
	ALT DWG. NO.: -			<b>B</b>	CSM34X3L-A	<b>A</b>
	ALT SAP: -			SCALE: 2:3		SHEET 1 OF 1

4

3

2

1