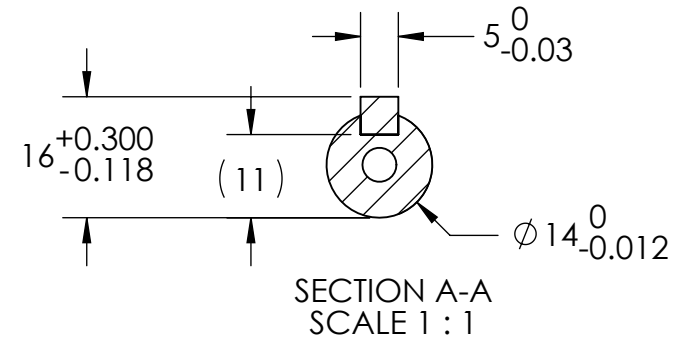


4

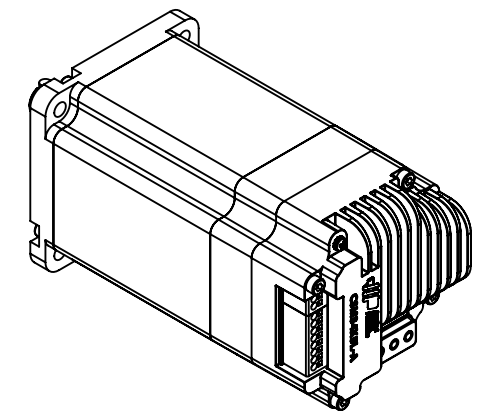
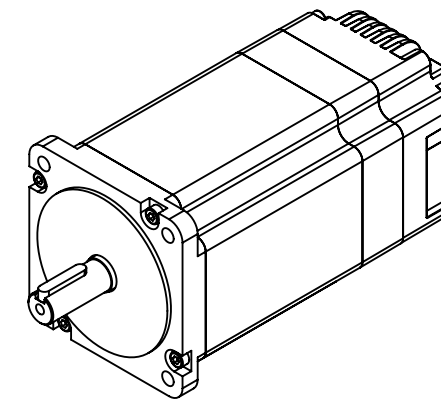
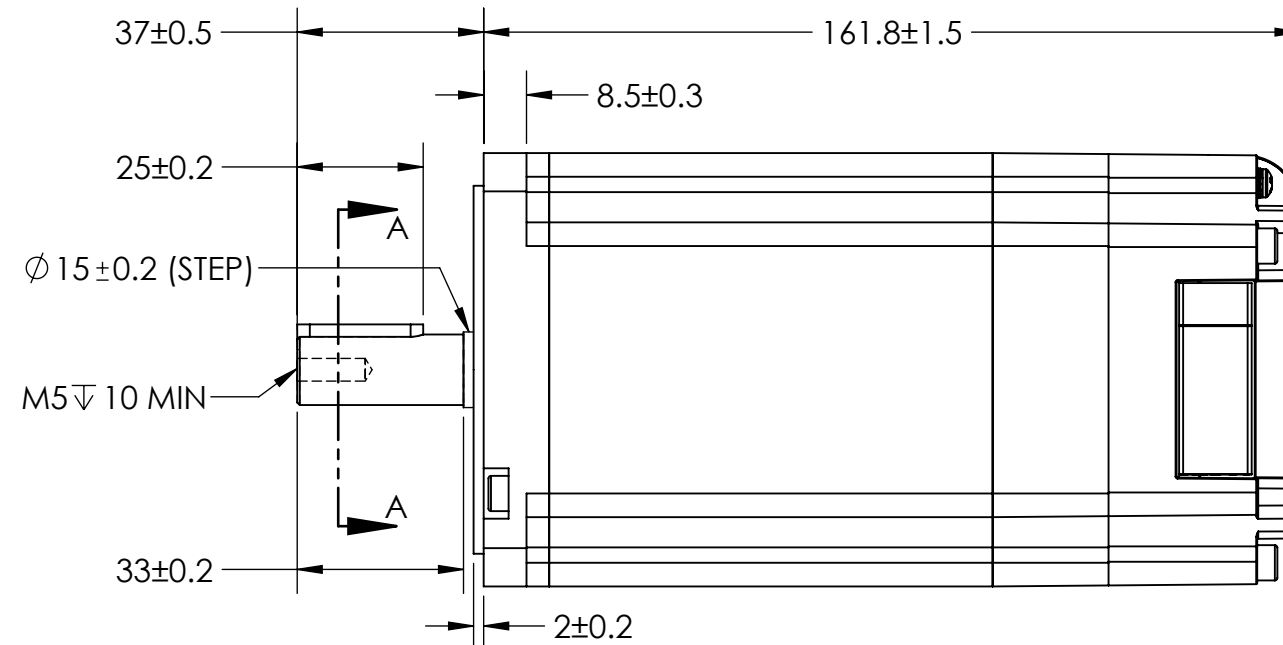
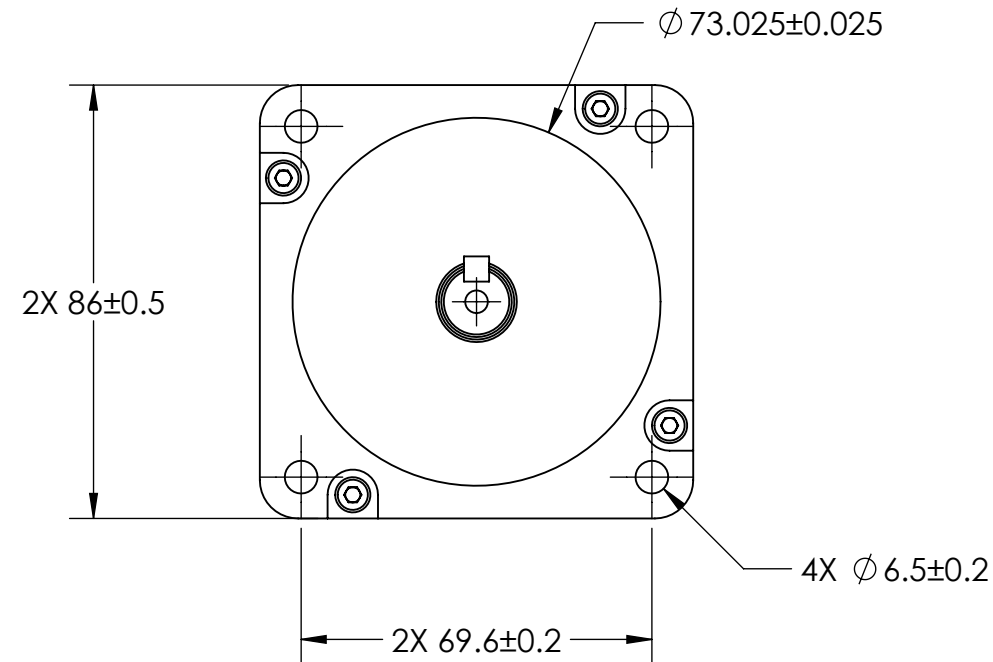
3

2

1



REVISIONS				
ECO #	REV.	DESCRIPTION	DATE	APPROVED
8877	A	INITIAL RELEASE	01/13/23	K.KESLER



SPECIFICATIONS

INPUT VOLTAGE	24 TO 48 VDC	HOLDING TORQUE	10.3 Nm
STEP ANGLE	1.8°	MAX AXIAL LOAD	<40 N
STEP ACCURACY	±0.09°	MAX RADIAL LOAD	260 N @ SHAFT END
AMBIENT TEMP	0 TO 40 °C	RADIAL PLAY	0.02 mm MAX @500 gf
STORAGE TEMP	-30 TO 70 °C	END PLAY	0.2 mm MAX @150 N
TEMP RISE	80 K MAX	SHAFT RUNOUT	0.025 mm
ROTOR INERTIA	3860 g · cm ²	WEIGHT	4.1 kg
RATED SPEED	0-2000 RPM	HUMIDITY	<90% (NON-CONDENSING)
APPROVALS	CE, RoHS		

NOTES:

- REFER TO PRODUCT HARDWARE MANUAL ON APPLIED-MOTION.COM FOR MORE DETAILS.
- SHAFT LOADS FOR L₁₀ LIFE OF 20,000 HOURS AT 1000 RPM. RADIAL LOAD AT END OF SHAFT.

<p>Applied Motion Products A MOONS' COMPANY PROPRIETARY AND CONFIDENTIAL</p> <p>THE INFORMATION CONTAINED IN THIS DRAWING IS THE SOLE PROPERTY OF APPLIED MOTION PRODUCTS. ANY REPRODUCTION IN PART OR AS A WHOLE WITHOUT THE WRITTEN PERMISSION OF APPLIED MOTION PRODUCTS IS PROHIBITED.</p>	THIRD ANGLE PROJECTION	NAME	DATE	TITLE:		
	UNLESS OTHERWISE SPECIFIED: DIMENSIONS ARE IN MILLIMETERS	DRAWN	C.BREUNINGER	01/12/23	INTEGRATED STEPPER MOTOR	
	TOLERANCES:	PRE.CHECK	-	-	SIZE	DWG. NO.
	- ANGULAR: ± 0.5	PRE.APPROVAL	-	-	B	CSM34X5L-A
	- ONE DECIMAL PLACE: ± 0.25	FIN.CHECK	K.KESLER	01/12/23	REV	A
- TWO DECIMAL PLACES: ± 0.13	SAP: 4696351006264		SCALE: 2:3			
MATERIAL	ALT DWG. NO.: -		SHEET 1 OF 1			
FINISH	ALT SAP: -					
DO NOT SCALE DRAWING						

4

3

2

1