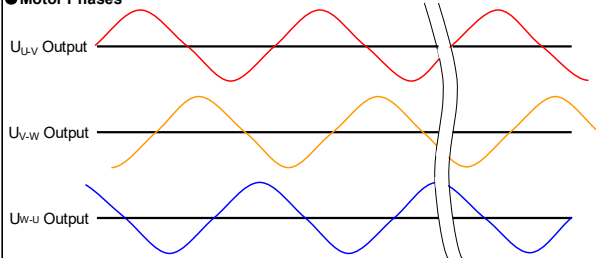


Motor Specifications

| | | | |
|----|-----------------------------------|--|-------------------|
| 1 | Drive Input power supply | | 208~240VAC |
| 2 | Basic DC Bus Voltage | V (DC) | 320V |
| 3 | Rated Output Power | Watts | 1500 |
| 4 | Rated Speed | rpm | 2000 |
| 5 | Max. Mechanical Speed | rpm | 3000 |
| 6 | Rated Torque | Nm | 7.16 |
| 7 | Continuous Stall Torque | Nm | 9.1 |
| 8 | Peak Torque | Nm | 21.5 |
| 9 | Rated Current | A (rms) | 8.5 |
| 10 | Continuous Stall Current | A (rms) | 9.6 |
| 11 | Peak Current | A (rms) | 26 |
| 12 | Voltage Constant ±10% | V(rms)/K rpm | 54.2 |
| 13 | Torque Constant ±10% | Nm/A(rms) | 0.842 |
| 14 | Winding Resistance(Line-Line)±10% | Ohm @20°C | 0.66 |
| 15 | Winding Inductance(Line-Line)±20% | mH | 5.4 |
| 16 | Inertia | kg m ² | 0.00183 |
| 17 | Thermal Resistance(mounted) | °C / W | 0.72 |
| 18 | Thermal Time Constant | Minutes | 25.3 Min |
| 19 | Heat Sink Size(iron) | mm | 400×400×20 |
| 20 | Shaft Load - Axial | N (max.) | 343N / 77 Lbf |
| 21 | Shaft Load - Radial(End of Shaft) | N (max.) | 683 N / 153.3 Lbf |
| 22 | Weight | kg | 7.3 kg /16.1 Lb |
| 23 | Approvals | CE,cULus,RoHS | |
| 24 | Encoder Resolution & Protocol | 21bit Absolute Multi-turn TMGW Protocol | |
| 25 | Encoder Type | Magnetic | |
| 26 | Insulation Class | F (155°C) | |
| 27 | IP rating | IP65(except shaft through hole and cable end connector) | |
| 28 | Installation Location | Indoors, free from direct sunlight, corrosive gas, inflammable gas | |
| 29 | Ambient Temperature | Operating 0 to 40°C, Storage -20 to 80°C | |
| 30 | Ambient Humidity (max.) | 85% (free from condensing) | |
| 31 | Altitude (max.) | 1000 m | |
| 32 | Vibration Resistance | 10-150Hz 49 m/s ² | |
| 33 | Rotor Poles | 10 | |

Shaft Load: (L₁₀ life, 20,000 hours, 2,000 RPM)

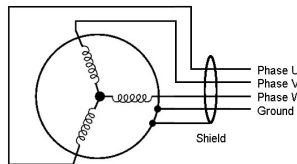
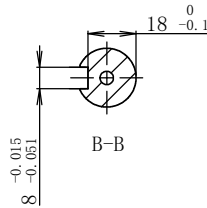
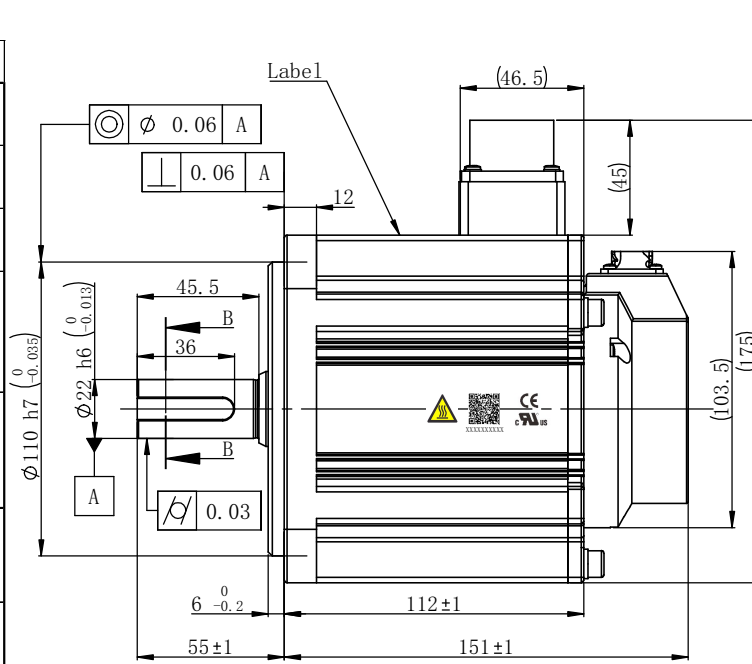
Motor Phases



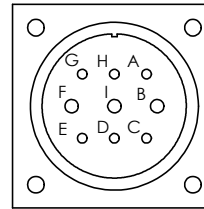
All the timing logics are obtained in CCW rotation as viewed from front shaft.

Notes:

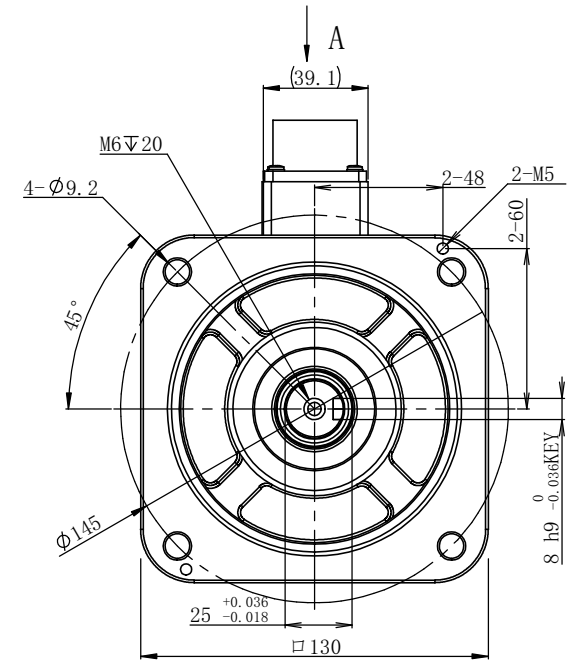
1. A shaft seal is shipped with motor, but not installed.
2. A KEY is shipped with motor, but not installed.



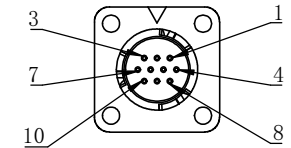
Motor Power Connector:
XMS3102A20-18S(EUMACX)



| | | | | | |
|--------|-----|-----|-----|-----|-----|
| Pin# | A | B | C | D | E |
| Signal | GND | W | N/C | N/C | N/C |
| Pin# | F | G | H | I | |
| Signal | U | N/C | N/C | V | |



Encoder Connector:
XM10-S10S-C(EUMACX)



View A

| | | | | | |
|--------|----------|-----|-----|-----|----------|
| Pin# | 1 | 2 | 3 | 4 | 5 |
| Signal | 5V | GND | SD- | SD+ | Battery+ |
| Pin# | 6 | 7 | 8 | 9 | 10 |
| Signal | Battery- | N/C | N/C | N/C | Shield |

Item Number
S0034

| | | | | | | | | | |
|---|--------------------|----|-----|------|----------|---------|------|------------|------------|
| Unit: mm | First Angle Method | AO | REV | Sign | Quantity | ECN NO. | Date | 2023.11.29 | 2023.08.22 |
| Tolerances for linear and angular dimensions without individual tolerance indications | | | | | | | | | |
| GB/T 1804-m eqv ISO 2768-1-m | | | | | | | | | |
| Geometrical tolerance for features without individual tolerance indications | | | | | | | | | |
| GB/T 1184-K eqv ISO 2768-2-K | | | | | | | | | |
| UNLESS OTHERWISE SPECIFIED | | | | | | | | | |

Applied Motion Products
A MOONS' COMPANY

MOONS'
moving in better ways

SM3M-133AXNUV
4611170001559

| | | |
|-------|---------|-------|
| Stage | Quality | Scale |
| D | | 1:2 |
| Sheet | 1 of 1 | |

Shanghai AMP & MOONS' Automation Co.,Ltd