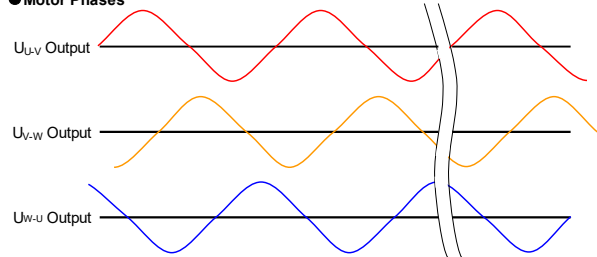


Motor Specifications

1	Drive Input power supply		208~240VAC
2	Basic DC Bus Voltage	V (DC)	320V
3	Rated Output Power	Watts	850
4	Rated Speed	rpm	1500
5	Max. Mechanical Speed	rpm	3000
6	Rated Torque	Nm	5.39
7	Continuous Stall Torque	Nm	5.8
8	Peak Torque	Nm	16.2
9	Rated Current	A (rms)	6
10	Continuous Stall Current	A (rms)	6
11	Peak Current	A (rms)	19
12	Voltage Constant ±10%	V(rms)/K rpm	55.3
13	Torque Constant ±10%	Nm/A(rms)	0.898
14	Winding Resistance(Line-Line)±10%	Ohm @20°C	1.08
15	Winding Inductance(Line-Line)±20%	mH	9
16	Inertia	kg m ²	0.00152
17	Thermal Resistance(mounted)	°C / W	0.66
18	Thermal Time Constant	Minutes	24 Min
19	Heat Sink Size(Iron)	mm	400×400×20
20	Shaft Load - Axial	N (max.)	196N /44 Lbf
21	Shaft Load - Radial(End of Shaft)	N (max.)	490 N / 110 Lbf
22	Weight	kg	8.5 kg /18.7 Lb
23	Approvals	CE,cULus,RoHS	
24	Encoder Resolution & Protocol	23bit Absolute Multi-turn Nikon Protocol	
25	Encoder Type	Optical	
26	Insulation Class	F (155°C)	
27	IP rating	IP65(except shaft through hole and cable end connector)	
28	Installation Location	Indoors, free from direct sunlight, corrosive gas, inflammable gas	
29	Ambient Temperature	Operating 0 to 40°C, Storage -20 to 80°C	
30	Ambient Humidity (max.)	85% (free from condensing)	
31	Altitude (max.)	1000 m	
32	Vibration Resistance	10-150Hz 49 m/s ²	
33	Rotor Poles	10	

Shaft Load: (L10 life, 20,000 hours, 2,000 RPM)

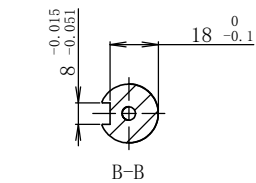
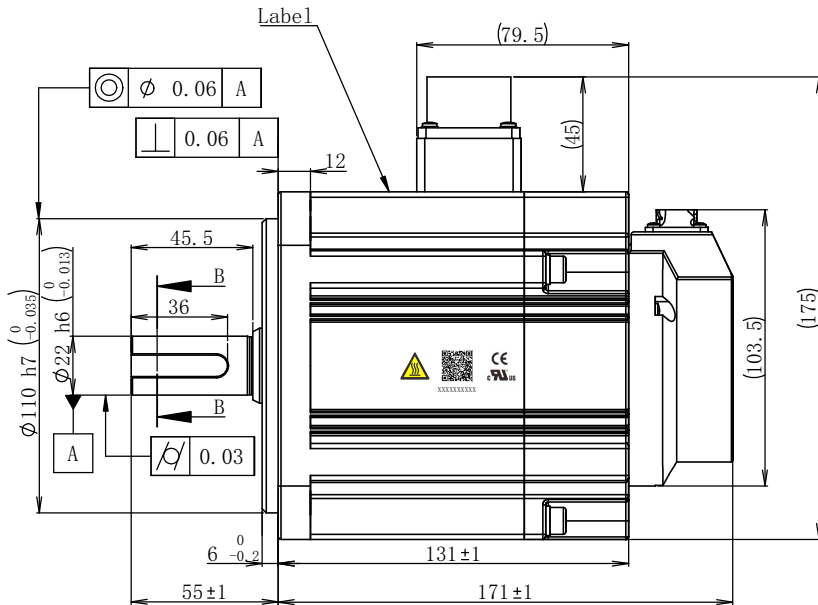
Motor Phases



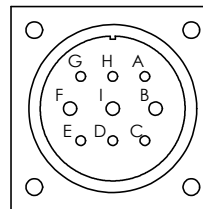
All the timing logics are obtained in CCW rotation as viewed from front shaft.

Notes:

1. A shaft seal is shipped with motor, but not installed.
2. A KEY is shipped with motor, but not installed.



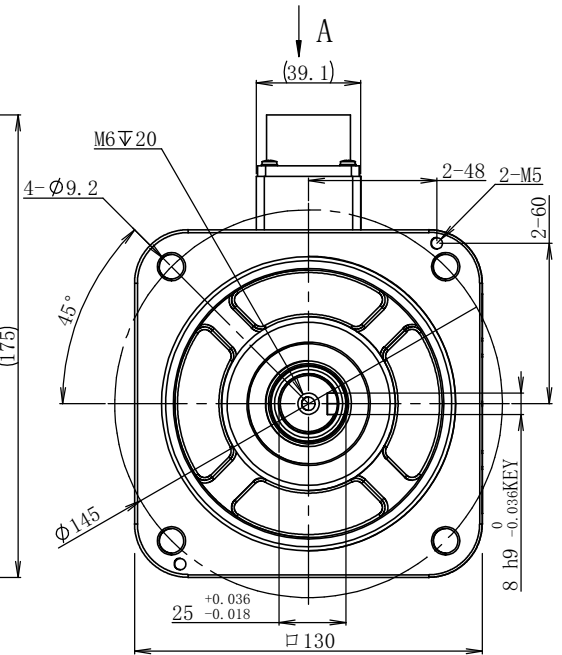
Motor Power Connector:
 Brake Connector:
 XMS3102A20-18S(EUMACX)



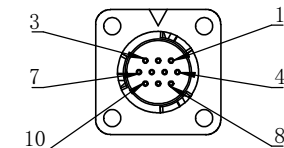
View A

Pin#	A	B	C	D	E
Signal	GND	W	+24V	0	N/C
Pin#	F	G	H	I	
Signal	U	N/C	N/C	V	

Static Friction Torque: 14.3N.m



Encoder Connector:
 XM10-S10S-C(EUMACX)



View A

Pin#	1	2	3	4	5
Signal	5V	GND	SD-	SD+	Battery+
Pin#	6	7	8	9	10
Signal	Battery-	N/C	N/C	N/C	Shield

Item Number
S0034

Unit: mm First Angle Method					
AI	△	1		2023.11.30	
AO			Preliminary	2023.08.22	
REV	Sign	Quantity	ECN NO.	Date	
Design			Technology		
Standard			Audit		
Check			Approve		
Marketing Dept			Date		



SM3H-132ATBUV		
4611170001582		
Stage	Quality	Scale
D		1:2
Sheet	1 of 1	

Shanghai AMP & MOONS' Automation Co., Ltd