

STM17 Quick Setup Guide



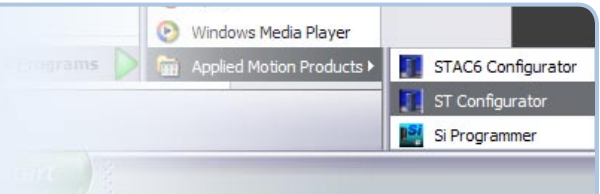
Requirements

To begin, make sure you have the following equipment:

- A small flat blade screwdriver for tightening the connectors (included).
- A personal computer running Microsoft Windows 98, 2000, ME, NT, XP, Vista or 7.
- *ST Configurator™* software, available for download at www.applied-motion.com/products/software.
- For SCL streaming command applications, please download the *SCL Utility* from the same page.
- For -Q models, please download *Q Programmer™*.
- For RS-232 models: an Applied Motion programming cable (included)
- For RS-485 models: an RS-422 or RS-485 port or adapter for your PC (see reverse for recommended RS-485 adapter)
- For more detailed information, please download and read the *STM17 Hardware Manual*, available at www.applied-motion.com/support/manuals.

Step 1

- Install the *ST Configurator™* software.
- Launch the software by clicking:
Start / Programs / Applied Motion Products / ST Configurator
- Connect the drive to your PC using the RS-232 programming cable or RS-422/485 adaptor



Step 2

- Wire the drive to the DC power source.
(do not apply power until all connections to the drive have been made)

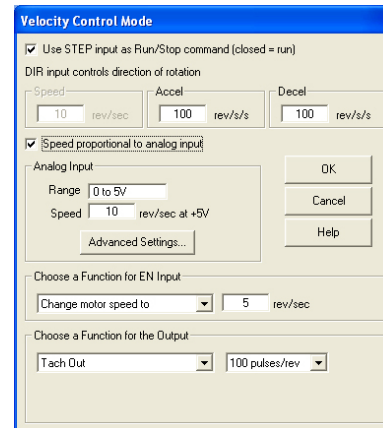
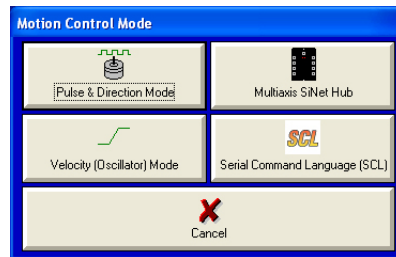
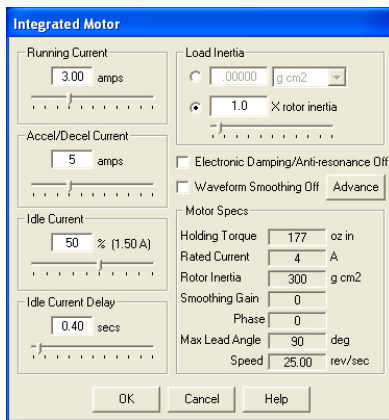
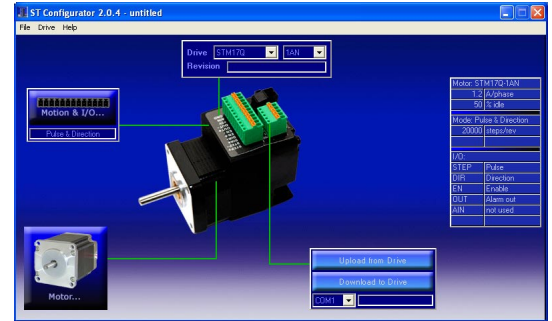
Note, the STM17 accepts DC voltages from 12-48V.

If using an external fuse, we recommend the following:
3AG, 2 amp slo blo (Littlefuse 313002.HXP)



Step 3

- Apply power to the STM17.
- Follow the configuration instructions in the *ST Configurator™* help screens. The *ST Configurator™* software can be used to set up your drive to operate in several different modes including: Pulse & Direction, Analog Velocity, and SCL.
- ST Configurator™* includes a self test option (under the Drive menu) to verify that the STM17 and power supply are correctly wired and configured.



If you have any questions or comments, please call Applied Motion Products Customer Support: (800) 525-1609, or visit us online at www.applied-motion.com.

Recommended RS-485 Adapter

USB-COMI-M (P/N 8500-003)

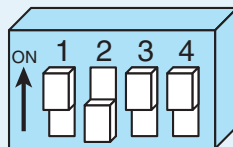
- Available from Applied Motion Products
- Converts RS-422 and RS-485 to USB

For four wire RS-485, set SW2 to OFF and SW1,3,4 to ON. On the USB-COMI-M screw terminal connector:

- Connect pin 1 to RX-
- Connect pin 2 to RX+
- Connect pin 3 to TX+
- Connect pin 4 to TX-
- Connect pin 6 to GND
- The DB-9 connector is not used



4 Wire RS-485



404 Westridge Dr.
Watsonville, CA 95076
Tel: 800-525-1609